

**ANNUAL  
SCIENTIFIC  
MEETING**  
26<sup>th</sup> – 28<sup>th</sup>  
SEPTEMBER  
2018

**Faculty of  
Radiologists,  
RCSI *meets*  
Society of  
Abdominal  
Radiology (SAR)**



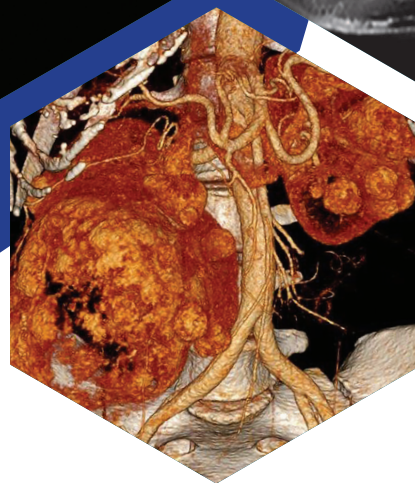
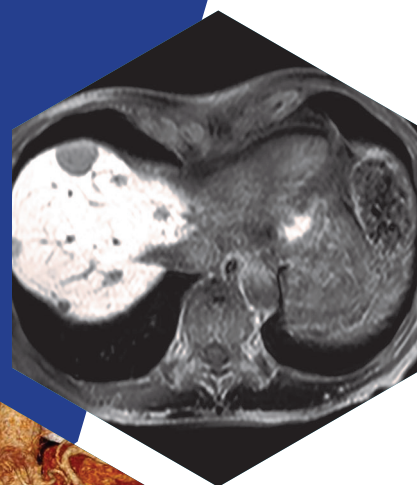
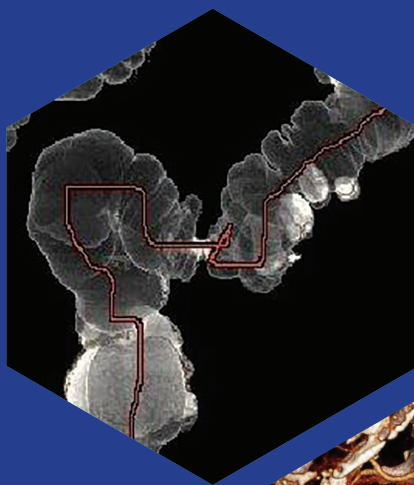
Faculty of Radiologists  
Dámh na Raideolaithe  
Royal College of Surgeons in Ireland  
CPD Credits Awarded:  
Diagnostic Radiology: 15.75 maximum  
Radiation Oncology: 7.75 maximum

Faculty of Radiologists  
Dámh na Raideolaithe

Annual Scientific Meeting  
26<sup>th</sup> – 28<sup>th</sup> September 2018

Prof Max F. Ryan  
Dean

We gratefully acknowledge Dr Denis Kelly, Cork  
University Hospital and Steven Broadhurst, Bayer for their  
assistance in sourcing images for this programme.



Faculty of Radiologists  
Royal College of Surgeons in Ireland  
123 St. Stephens Green  
Dublin 2  
Phone: 00 353 1 402 2139 / 402 2476  
Fax: 00 353 1 402 2466  
Web: [www.radiology.ie](http://www.radiology.ie)

To register for our scientific meetings please visit  
[www.radiology.ie](http://www.radiology.ie)  
and follow the link on the home page  
'Next Event'

If you have any difficulties registering  
for the Annual Scientific Meeting please contact:  
Ms. Patricia McColgan  
Abbey Conference & Corporate  
Phone: 00 353 1 648 6130  
Email: [for2018@abbey.ie](mailto:for2018@abbey.ie)

## MEETING AT A GLANCE

### Diagnostic Radiology Programme

#### WEDNESDAY 26<sup>th</sup> SEPTEMBER

O'Flanagan Theatre, RCSI

08:30	Registration
08:55	Welcome Address, Prof Max F. Ryan, Dean, Faculty of Radiologists
09:00	Scientific Session 1
10:30	Tea/Coffee
11:10	Scientific Session 2
12:50	Lunch (1784 Lower Ground Floor)
13:40	Practice Based Learning/Audit Session /Fielding Medal

#### THURSDAY 27<sup>th</sup> SEPTEMBER

O'Flanagan Theatre, RCSI

08:30	Registration
08:50	Welcome Address, Prof Max F. Ryan, Dean, Faculty of Radiologists
09:00	Session 1
10:20	Tea/Coffee & Opening of Technical Exhibition
10:40	Session 2
11:40	Tea/Coffee
12:00	Session 3
13:00	Lunch (Examination Hall)
14:00	Session 4: 3 Tips
15:00	Tea/Coffee
15:15	Session 5: Registrars Research Prize – Sylvester Boland, RAMI Medal
16:15	End of Day 2
18.00 – 19.30	Drinks Reception – Shelbourne Hotel, Adam Suite

#### FRIDAY 28<sup>th</sup> SEPTEMBER

O'Flanagan Theatre, RCSI

08:30	Registration
09:00	Session 6
10:20	Tea/Coffee
10:40	Session 7
11:40	Tea/Coffee
12:00	Session 8
13:00	Lunch (Examination Hall)
14:15	Session 9
15:00	Radiation Oncology Honorary Fellows Lecture
15:45	Haughton Lecture
16:30	Annual General Meeting – Faculty of Radiologists
17:00	End of Day 3
19:00	Honorary Conferring & Black Tie Dinner

#### Parallel Session Tutorial Room 4, RCSI

11.30	Cardiac Sub Group Meeting
13.00	Breast Sub Group Meeting
14.30	Paediatric Sub Group Meeting

## MEETING AT A GLANCE

### Radiation Oncology Programme

#### WEDNESDAY 26<sup>th</sup> SEPTEMBER

O'Flanagan Theatre, RCSI

16:00	Radiation Oncology - St Luke's Registrar's Prize
17:45	End of Day

#### FRIDAY 28<sup>th</sup> SEPTEMBER

Cheyne Theatre, RCSI

08:30	Registration
08:55	Opening of Meeting by Dr Carol McGibney
09:00	Session 1
10:20	Tea/Coffee
10:45	Session 2: New Frontiers in GI Cancer
12:30	Lunch (Examination Hall)
13:30	Session 3: Advances in Radiation Oncology: New Lamps for Old?
14:45	Tea/Coffee
15:00	Session 4: Combined Keynote Address (O'Flanagan Lecture Theatre)
16:30	Annual General Meeting – Faculty of Radiologists
17:00	End of Day
19:00	Honorary Conferring & Black Tie Dinner

## DIAGNOSTIC RADIOLOGY PROGRAMME

### WEDNESDAY: 26<sup>th</sup> SEPTEMBER - SPR PRESENTATIONS

O'Flanagan Theatre, RCSI

Faculty of Radiologists CPD Credits:  
Diagnostic Radiology: 4.5 Credits (External)

#### Scientific Session 1

Moderator: Dr Paul Foran, Connolly Hospital

Judging Panel: Bernard F. King, Jr., MD, FACR, FSAR  
William Ramsden  
Erick M. Remer, MD, FACR

Time	Presentation	Presenter	Senior Author	Hospital
09:00	Welcome Address and Panel Introduction	Prof Max F. Ryan, Dean		Faculty of Radiologists
09:09	A novel mobile phone App to simplify and standardize thyroid nodule biopsy	Ailbhe M McDermott	D Sheppard	Galway University Hospital
09:18	The accuracy of T2 sagittal MRI brain for diagnosis of optic neuropathy	Gerard M Healy	RP Killeen	St Vincent's University Hospitals
09:27	Mass casualty incidents – are you ready? A cross-sectional survey assessing radiologist's preparedness and an evidenced-based radiology MCI protocol template	James W Ryan	F Bolster	Mater Misericordiae University Hospital
09:36	Transperineal Prostate Biopsy: Technical considerations, Diagnostic yield and Complication rate.	Jack W Power	MM McNicholas	Mater Misericordiae University Hospital
09:45	Assessing the patient perceived effectiveness of varicocele embolization in the treatment of varicocele related orchalgia: A single center 15 year experience.	Mark Sheehan	M Lee	Beaumont Hospital
09:54	Systematic Review Of Dose Reduction In Computed Tomography Abdomen And Pelvis Using Iterative Reconstruction	Kheshwant Gill	MM Maher	Cork Hospital
10:03	Microvascular plugs via microcatheter: Assessment of the procedures, complications and early outcomes in the North of Scotland	John Fitzpatrick	A Pantos	Aberdeen Royal Infirmary
10:12	CT guided Vertebral body biopsy versus alternate biopsy sites:	Alexandra N Murphy	EC Kavanagh	Mater Misericordiae University Hospital
10:21	Multi modality imaging of peritoneal carcinomatosis	Jack W Power	P Dempsey	Mater Misericordiae University Hospital
10:30 - 11:10	Tea/Coffee			

## DIAGNOSTIC RADIOLOGY PROGRAMME

### Scientific Session 2

Moderator: Dr Ian Murphy, Tallaght University Hospital

Judging Panel: Bernard F. King, Jr., MD, FACR, FSAR  
William Ramsden  
Erick M. Remer, MD, FACR

Time	Presentation	Presenter	Senior Author	Hospital
11:10	MRI of patients with cardiac implantable electronic devices: pacemakers, implantable cardioverter devices (ICDs), and implantable cardiac monitors (ICMs) – a four year review	Aoife S Murray	JG Murray	Mater Misericordiae University Hospital
11:19	Coronary computed tomography angiography(CCTA)of orthotopic cardiac transplant patients: a single centre experience	Alexandra N Murphy	JG Murray	Mater Misericordiae University Hospital
11:28	Lateral CXR in addition to frontal should be standard protocol in patients presenting to ED with acute respiratory symptoms.	Caitriona Logan	R Dunne	Beaumont Hospital
11:37	Non-femoral access for endovascular thrombectomy in acute ischaemic stroke: A case series	Adam Roche	S Looby	Beaumont Hospital
11:46	Iodine131 Diagnostic Whole Body Scanning Pre-Therapy: Is it ever appropriate?	Lynn Gaynor	K Carson	St Luke's Hospital
11:55	18F-FDG PET/CT in patients with early oesophageal and gastric cancer being treated by endoscopic mucosal resection.	Caoilfhionn Ní Leidhin	N Sheehy	St. James's Hospital
12:04	A prospective study of low-dose CT with model-based iterative reconstruction in Crohn's disease	Brian W Carey	MM Maher	Cork University Hospital
12:13	Infectious complications in targeted and systematic transrectal ultrasonography (TRUS)-guided prostate biopsies performed in Beaumont Hospital	Renuka Durganadu	R Duganadu	RCSI
12:22	Diagnosis and staging of ovarian cancer- can the NCCP ultrasound criteria be applied to other imaging modalities?	Claire Crowley	J Barry	Cork University Hospital
12:31	Audit of Radiologist Referral for Incidental detection of Diabetes Mellitus in patients presenting for FDG-PET/CT	Eva O'Reilly	K O'Regan	Cork University Hospital
12:40	Changes in imaging workflow in the setting of antibiotic treatment for uncomplicated appendicitis	Dermot Bowden	M Morrin	Beaumont Hospital
12:50 - 13:40	Lunch (1784 Lower Ground Floor)			



## DIAGNOSTIC RADIOLOGY PROGRAMME

---

### Practice Based Learning/Audit Session/Fielding Medal

Moderator: Prof Dermot Malone, St Vincent's University Hospital

#### Practice Based Learning

Time	Presentation	Presenter	Hospital
13:40	The diagnostic performance of CT intracranial angiogram in diagnosis of brain stem death.	Jennifer Hennebry	University Hospital Waterford
13:49	Should CT be used routinely to screen for cancer in cases of first unprovoked venous thromboembolism?	Claire Crowley	Cork University Hospital & Mercy University Hospital
13:58	For men with suspected prostate cancer is MRI guided biopsy more sensitive and specific than TRUS biopsy in diagnosing prostate cancer?	Shane McAearney	NI ST2
14:07	Is there a role for the addition of temozolomide to radiotherapy in elderly patients with glioblastoma?	Orla Houlihan	St Luke's Radiation Oncology Network
14:16	For men with suspected prostate cancer is MRI guided biopsy more sensitive and specific than TRUS biopsy in diagnosing prostate cancer	Amy O'Brien (Winner PBL)	St. Vincent's University Hospital

#### Audit

14:25	A clinical Audit of Cervical Spine Imaging	Colin O'Rourke	Tallaght University Hospital
14:34	"All eyes on us" - The inclusion of eye lens on routine CT head imaging in UHW.	Jennifer Hennebry	University Hospital Waterford
14:43	Work and patient flow through the CT department: An audit cycle to improve satisfaction and efficiency	Ailbhe McDermott (Winner Audit Module)	University Hospital Galway
14:52	Recall and Cancer Detection Rates from Clinical Breast Examination and MRI in Women with a High Risk of Breast Cancer	Samantha Keeling (Winner Fielding Medal)	St James's Hospital



## DIAGNOSTIC RADIOLOGY PROGRAMME

### THURSDAY: 27<sup>th</sup> SEPTEMBER

O'Flanagan Theatre, RCSI

Faculty of Radiologists CPD Credits:  
Diagnostic Radiology: 5.25 Credits (External)

#### Session 1

Moderator: Dr Peter Kavanagh, Connolly Hospital

Time	Presentation	Faculty	Organisation
09:00	Endometriosis: US vs MRI	Shweta Bhatt, MD, FSAR	Society of Abdominal Radiology, USA
09:20	Tumor response assessment	Meghan G. Lubner, MD, FSAR	Society of Abdominal Radiology, USA
09:40	Ovarian torsion: Pearls and pitfalls	Shweta Bhatt, MD, FSAR	Society of Abdominal Radiology, USA
10:00	Small bowel Obstruction: When to worry	Meghan G. Lubner, MD, FSAR	Society of Abdominal Radiology, USA
10:20 – 10:40	Tea/Coffee and Opening of Technical Exhibition		

#### Session 2

Moderator: Dr Peter Kavanagh, Connolly Hospital

10:40	Adnexal masses: Is ultrasound enough?	Shweta Bhatt, MD, FSAR	Society of Abdominal Radiology, USA
11:00	Oncologic imaging biomarkers	Meghan G. Lubner, MD, FSAR	Society of Abdominal Radiology, USA
11:20	Mastering the Liver Tumor Board	Matthew S. Davenport, MD, FSAR	Society of Abdominal Radiology, USA
11:40 – 12:00	Tea/Coffee		

#### Session 3

Moderator: Dr Peter Ball, Royal Victoria Hospital

12:00	Imaging of Prostate Cancer Using PSMA PET	Thomas A. Hope, MD, FSAR	Society of Abdominal Radiology, USA
12:20	Management of Renal Cell Carcinoma: Evolution or Revolution?	Erick M. Remer, MD, FACR, FSAR	Society of Abdominal Radiology, USA
12:40	Imaging Adrenal Nodules: Opportunities to Improve Patient Care	Erick M. Remer, MD, FACR, FSAR	Society of Abdominal Radiology, USA
13:00 – 14:00	LUNCH (Examinations Hall)		

## DIAGNOSTIC RADIOLOGY PROGRAMME

### Session 4: 3 TIPS

Moderator: Dr Ruth Dunne, Beaumont Hospital

Time	Presentation	Faculty	Organisation
14:00	Approach to retroperitoneal masses	Erick M. Remer, MD, FACR, FSAR	Society of Abdominal Radiology, USA
14:05	Subtyping solid renal masses	Matthew S. Davenport, MD, FSAR	Society of Abdominal Radiology, USA
14:10	Spectral waveforms	Shweta Bhatt, MD, FSAR	Society of Abdominal Radiology, USA
14:15	Gadoxetate technique	Thomas A. Hope, MD, FSAR	Society of Abdominal Radiology, USA
14:20	Image guided procedures: Special considerations	Meghan G. Lubner, MD, FSAR	Society of Abdominal Radiology, USA
14:25	Approach to presacral masses	Erick M. Remer, MD, FACR, FSAR	Society of Abdominal Radiology, USA
14:30	Mentoring	Matthew S. Davenport, MD, FSAR	Society of Abdominal Radiology, USA
14:35	Lymph node characterization	Shweta Bhatt, MD, FSAR	Society of Abdominal Radiology, USA
14:40	LI-RADS tips	Thomas A. Hope, MD, FSAR	Society of Abdominal Radiology, USA
14:45	Tumor response assessment: Special considerations	Meghan G. Lubner, MD, FSAR	Society of Abdominal Radiology, USA
15:00 – 15:15	Tea/Coffee		

### Session 5: Registrars Research Prize - Sylvester Boland, RAMI Medal

Moderator: Dr Patricia Cunningham, Louth Meath Hospital Group

Judging Panel:	Bernard F. King, Jr., MD, FACR, FSAR Dr Patricia Cunningham		
15:15	Diagnostic accuracy of SUVmax in predicting malignancy of supraclavicular lymph nodes from primary oesophageal cancer.	Colin O'Rourke	Tallaght University Hospital
15:30	Radiological-Pathological correlation of pre-transplant imaging and explanted livers: What is the prevalence of HCC in patients with LI-RADS 2017 category 5, 4/5 and 4 lesions?	Amy O'Brien	St Vincent's University Hospital
15:45	The accuracy of T2 sagittal MRI brain for diagnosis of optic neuropathy	Gerard Healy	St Vincent's University Hospital
16:00	The integration of contemporary teaching strategies into a radiology rotation for medical students: A randomised controlled trial.	Ciaran Redmond	Beaumont Hospital
16:15	Conclude for the day		
18.00 – 19.30	Drinks Reception – Shelbourne Hotel, Adam Suite		

## DIAGNOSTIC RADIOLOGY PROGRAMME

### FRIDAY: 28TH SEPTEMBER

O'Flanagan Theatre, RCSI

Faculty of Radiologists CPD Credits:  
Diagnostic Radiology: 6 Credits (External)

#### Session 6

Moderator: Prof. Helen Fenlon, Mater Misericordiae University Hospital

Time	Presentation	Faculty	Organisation
09:00	Imaging of neuroendocrine tumors	Thomas A. Hope, MD, FSAR	Society of Abdominal Radiology, USA
09:20	The Diagnostic Process: More than Just Interpreting Images	Matthew S. Davenport, MD, FSAR	Society of Abdominal Radiology, USA
09:40	Imaging of Cholangiocarcinoma	Erick M. Remer, MD, FACR, FSAR	Society of Abdominal Radiology, USA
10:00	Contrast Media Controversies	Matthew S. Davenport, MD, FSAR	Society of Abdominal Radiology, USA
10:20 – 10:40	Tea/Coffee		

#### Session 7

Moderator: Dr Siobhan McGrane, University Hospital Limerick

10:40	Peptide Receptor Radionuclide therapy	Thomas A. Hope, MD, FSAR	Society of Abdominal Radiology, USA
11:00	Complications of Oncologic Therapy	Meghan G. Lubner, MD, FSAR	Society of Abdominal Radiology, USA
11:20	Acute Scrotal Pain	Shweta Bhatt, MD, FSAR	Society of Abdominal Radiology, USA
11:40 – 12:00	Tea/Coffee		

#### Session 8

Moderator: Dr Sean McSweeney, Cork University Hospital

12:00	Visceral Adipose/Sarcopenia	Erick M. Remer, MD, FACR, FSAR	Society of Abdominal Radiology, USA
12:20	Quality & Safety in an Academic Medical Center	Matthew S. Davenport, MD, FSAR	Society of Abdominal Radiology, USA
12:40	Rectal cancer imaging	Thomas A. Hope, MD, FSAR	Society of Abdominal Radiology, USA
13:00 – 14:00	Lunch (Examinations Hall)		

#### Session 9

Moderator: Prof Max F. Ryan, Dean

14:15	Wellbeing in Radiology & Panel Discussion	Prof. Max F. Ryan	Faculty of Radiologists
15:00	<b>Radiation Oncology Fellows Lecture:</b> Oligometastatic disease in gastro-intestinal malignancies and the role of stereotactic radiotherapy	Prof. Maria Hawkins	CRUK/MRC Oxford Institute for Radiation Oncology
15:45	<b>Haughton Lecture:</b> Artificial Intelligence and Radiology	Bernard F. King, Jr., MD, FACR, FSAR	Society of Abdominal Radiology, USA
16:30	<b>Faculty of Radiologists – Annual General Meeting</b> Fellows of the Faculty are welcome to attend		
17:00	End of Meeting		
19:00	<b>Honorary Conferring &amp; Black Tie Dinner</b> Presentation of Honorary Fellowships and prizes		

## DIAGNOSTIC RADIOLOGY BIOGRAPHIES

---

### **BERNARD F. KING, MD, FACR, FSAR**

Bernard F. King, MD, FACR, FSAR is a Professor of Radiology at the Mayo Clinic in Rochester, MN. He is immediate Past Chair of the Dept. of Radiology at the Mayo Clinic (2006-2013) and was also the President of the Mayo Clinic Staff in 2014. He currently the President of the Society of Abdominal Radiology (SAR) and is the immediate Past President of the American Roentgen Ray Society (ARRS). Dr. King received a B.S degree from the University of Notre Dame and an M.D. degree from Washington University School of Medicine in St Louis in 1980. After completing his radiology residency at the University of Indiana, Dr. King completed a fellowship in Genitourinary Radiology at the Mayo Clinic and joined the Mayo staff in 1989. Dr. King's research has spanned the entire genitourinary tract and, most recently, Dr. King has focused his research on MR quantitative imaging of the Kidneys and Multiparametric MR Imaging of the prostate gland.

### **MATTHEW S. DAVENPORT, MD, FSAR**

Dr. Davenport is an internationally recognized expert on the safety and efficacy of radiographic contrast material. He has served on the U.S. Food and Drug Administration Medical Imaging Drugs Advisory Committee, the National Cancer Institute Clinical Imaging Steering Committee, and the American College of Radiology's Committee on Drugs on Contrast Media (current chair). He has numerous national responsibilities, is a co-author on national policy statements, has published over 100 manuscripts, is chair of the Michigan Radiology Quality Collaborative, and is a funded investigator. His primary clinical interests include prostate MRI, urologic imaging, hepatobiliary imaging, and quality improvement.

### **THOMAS A. HOPE, MD**

Thomas Hope, MD, is an Associate Professor in Residence in the Abdominal Imaging and Nuclear Medicine sections at UCSF and the San Francisco Veterans Affairs Medical Center. In 2007, he received his medical degree from Stanford University School of Medicine and he completed a one-year internship at Kaiser Permanente, San Francisco. From 2008-2012, Dr. Hope completed a residency in Diagnostic Radiology at the University of California, San Francisco, followed by a clinical fellowship in Body MRI and Nuclear Medicine from Stanford Medical Center in 2013. Dr. Hope's main research focus is on novel imaging agents and therapies. He is leading the development of <sup>68</sup>Ga-PSMA-11, aiming for FDA approval. He has combined his interest in MR imaging with PET in the simultaneous modality PET/MRI, helping lead the development of the clinical PET/MRI program. Additionally he is developing the PRRT (peptide receptor radionuclide therapy) program for neuroendocrine tumors at UCSF.

### **ERICK M. REMER, MD FACR FSAR**

Dr. Erick M. Remer, MD FACR FSAR is Professor of Radiology in the Section of Abdominal Imaging in the Imaging Institute at the Cleveland Clinic. He completed his undergraduate and medical degrees at the University of Michigan, a transitional internship at Henry Ford Hospital, and completed residency and was Chief Resident at Northwestern University. He then returned to Ann Arbor to complete a fellowship in CT, MRI, and Ultrasound.

Dr. Remer is actively involved in many of Radiological organizations and has served as Chair of the GU Scientific Program Committees for the RSNA and ARRS, as a member of the Education Program Committee and Annual Meeting Council Advisory Board of the Society of Abdominal Radiology, and recently finished a term as Specialty Chair of the ACR Appropriateness Criteria expert panel on Urological Imaging. He is currently a member of a number of committees for ACR, ARRS, and SAR and participates on interdisciplinary committees with ACEP and the AUA. Dr. Remer serves as Director of Abdominal Imaging Research at the Cleveland Clinic and his interests lie predominantly in the area of Genitourinary Imaging. He has participated in 145 peer-reviewed publications, 148 abstract presentations, and 104 invited presentations.

## DIAGNOSTIC RADIOLOGY BIOGRAPHIES

---

### **MEGHAN G. LUBNER, MD, FSAR**

Meghan Lubner, MD, FSAR is an associate professor of radiology in the Abdominal Imaging and Intervention section at the University of Wisconsin. She completed undergraduate and medical degrees at the University of Wisconsin, internship and diagnostic radiology residency at Washington University in St. Louis, MO. She then returned to University of Wisconsin where she completed a fellowship in abdominal imaging and intervention and subsequently joined the UW staff. She is currently serving as the Medical Director of Clinical CT and co-director of the CT research program. She is an active member of multiple committees with the RSNA, ARRS and SAR and has published over 100 manuscripts. Her clinical and research interests include oncologic imaging, advanced CT applications and CT imaging biomarkers, image guided interventions and tumor ablation.

### **SHWETA BHATT, MD**

Shweta Bhatt, MD is currently employed as a Professor of Radiology at Mayo Clinic, Florida. She joined Mayo Clinic in July 2017, having moved from University of Rochester, NY where she finished her initial training (fellowships) and then continued as faculty in abdominal imaging until 2017.

Her academic interests include Ultrasound and Genitourinary radiology, in particular female pelvic imaging. She has approximately 64 peer reviewed publications, and about 77 book chapters.

Dr. Bhatt has given lectures at several national radiology meetings, including ARRS, AIUM, SAR and SRU. She has also travelled to India and Turkey for invited lectures. Dr. Bhatt has been actively involved with RSNA as a Chair of a refresher course for 4 years, and a faculty member for the hands-on workshop for the last 8 years. She is also involved in the administrative responsibilities of various radiology organizations, including Chair of the Instruction Committee for Ultrasound (ARRS), Chair of the Membership Committee (SRU) and Vice-Chair of Abdominal Community (AIUM). She enjoys mentoring trainees, and they have graciously honored her with several teaching awards.

In her free time, she does Ballroom dancing, meditating, cooking, and travelling. Ireland has been on her bucket list for a long time.

## DIAGNOSTIC RADIOLOGY POSTER DISPLAY LIST

---

### DISPLAY NO. 1

#### Incidence of Clinically Significant Extracolonic Findings on CT Colonography

Dillon H, Slattery J

Department of Radiology, Midlands Regional Hospital, Mullingar. Co. Westmeath, Ireland.

### DISPLAY NO. 2

#### Lesions at the umbilicus in adults: common and uncommon- Pictorial Review

J Stepien, N El Saeity, V Georgieva, N Ramesh

Department of Radiology, Midland Regional Hospital, Portlaoise

### DISPLAY NO. 3

#### Incidental lesions of the urinary bladder noted on CT Abdomen and Pelvis

J Stepien, N El Saeity, V Georgieva, N Ramesh

Department of Radiology, Midland Regional Hospital, Portlaoise

### DISPLAY NO. 4

#### The effect of advanced age on the utilisation of CT in Trauma

Brendan S Kelly 1, Ciara O'Brien 1, Marie T Cooney 2, John Cronin 3, Eric Heffernan 1.

Departments of Radiology (1), Medicine for the Elderly (2) and Emergency Medicine (3),  
St Vincents University Hospital Elm Park Belfield Dublin 4.

### DISPLAY NO. 5

#### Intussusceptions in Adults - pictorial review of various causes

G Saha, N El Saeity, N Ramesh

Department of Radiology, Midland Regional Hospital, Portlaoise

### DISPLAY NO. 6

#### Audit of reporting quality in Dementia imaging in routine clinical practice

John Fitzpatrick, Allison Murray

Department of Radiology, Aberdeen Royal Infirmary, Aberdeen, UK

### DISPLAY NO. 7

#### Pictorial Review of MRI Rectal Cancer Regression

C.McConville, A.Wray

Ulster Hospital Dundonald, Co.Down, Northern Ireland.

### DISPLAY NO. 8

#### Signs in Abdominal Radiology Inspired by Animals; An Interactive Pictorial Review.

A. O'Brien, S. Clifford, Z. Hutchinson

Department of Radiology, St. Vincent's University Hospital, Elm Park, Dublin 4

### DISPLAY NO. 9

#### The Role of Musculoskeletal Radiology in Modern Sports Medicine

J Hynes, J Walsh, T Farrell, S Toland, E Kavanagh, S Eustace

Mater Misericordiae University Hospital

### DISPLAY NO. 10

#### Are we over-imaging the obese patient with suspected pulmonary embolism?

Mary-Louise , ML., Gargan, Radiology, AMNCH, Dublin

Maeve, M., O'Sullivan, Radiology, AMNCH, Dublin

Orla, O., Buckley, Radiology, AMNCH, Dublin

Prof. William, W., Torreggiani, AMNCH, Dublin

### DISPLAY NO. 11

#### Training in musculoskeletal radiology in Europe

S.Toland, AS.Murray, C.O'Byrne, S.Eustace

Mater Misericordiae University Hospital

## DIAGNOSTIC RADIOLOGY POSTER DISPLAY LIST

---

### DISPLAY NO. 12

Imaging in sports injuries - A comparison of injury in men and women.

S.Toland, J.Hynes, S.Eustace

Mater Misericordiae University Hospital

### DISPLAY NO. 13

Radiology in Anatomy Undergraduate Teaching in Australia and New Zealand

JW Power, SVUH Dublin

P Dempsey, Mater Hospital Dublin

D Barry, TCD Dublin

S Davy, TCD Dublin

G Slater, Greenslopes Hospital, Brisbane Australia

MMJ McNicholas, Mater Hospital Dublin

### DISPLAY NO. 14

Pictorial Review of tracheal diseases.

DT Ryan<sup>1</sup>, J McCann<sup>1</sup>

<sup>1</sup>. Department of Radiology, St. Vincent's University Hospital.

### DISPLAY NO. 15

A review of factors influencing failed retrieval of preoperatively inserted IVC filters:

A single-institution case series

D, Bowden, Interventional Radiology, Beaumont Hospital, Dublin.

A, Lee, Interventional Radiology, Beaumont Hospital, Dublin.

T, Murray, Interventional Radiology, Beaumont Hospital, Dublin.

M, Given, Interventional Radiology, Beaumont Hospital, Dublin.

M, Lee, Interventional Radiology, Beaumont Hospital, Dublin.

### DISPLAY NO. 16

Computed Tomography Guided Microwave Ablation of Lung Tumours:

A single centre experience

D Mulholland, J Kavanagh, E McCarthy, P Beddy

Department of Radiology, St James's Hospital, Dublin

### DISPLAY NO. 17

Bridging The Gap: Interventional Radiological Techniques In Ureteric Injury.

C.McConville, S.McAearney, C.Boyd.

Radiology Department, Ulster Hospital, Dundonald, Co.Down.

### DISPLAY NO. 18

Audit of use of Lean Six Sigma Methodology shows reduction of inpatient waiting time for Peripherally Inserted Central Catheter (PICC) insertion

AS Murray, P Hughes, M Brennan, J Hynes, S K Eustace, S Gilchrist, A Dolan, LP Lawler.

Department of Radiology, Mater Misericordiae University Hospital, Eccles St, Dublin 7.

### DISPLAY NO. 19

Mimics of renal colic and flank pain

J Stepien, N El Saeity, V Georgieva, N Ramesh

Department of Radiology, Midland Regional Hospital, Portlaoise

### DISPLAY NO. 20

High Resolution CT Thorax: An audit comparing radiation exposures in two different CT scanners against national diagnostic reference levels

R. Whiriskey, J. Bruzzi

Department of Radiology, Galway University Hospital, Galway.



## DIAGNOSTIC RADIOLOGY POSTER DISPLAY LIST

---

### DISPLAY NO. 21

Establishing a whole body ultra low-dose CT protocol using model-based iterative reconstruction for the assessment of ventriculoperitoneal shunt dysfunction

Mika O'Callaghan Maher<sup>1</sup>, Richard G Kavanagh<sup>2</sup>, Brian W Carey<sup>2</sup>, Karl James<sup>2</sup>, Deirdre Hussey<sup>3</sup>, Claire Crowley<sup>2</sup>, Michael GJ O'Sullivan<sup>3</sup>, Owen J O'Connor<sup>2</sup>, Michael M Maher<sup>2</sup>

1. School of Medicine, University College Cork, College Road, Cork

2. Department of Radiology, Cork University Hospital, Wilton, Cork

3. Department of Neurosurgery, Cork University Hospital, Wilton, Cork

### DISPLAY NO. 22

Imaging characteristics of primary lymphoma of bone: a pictorial review

Hughes NM<sup>1</sup>, Connaghan G<sup>2</sup>, Crotty T<sup>3</sup>, Collins CD<sup>1</sup>

<sup>1</sup>Department of Radiology, St. Vincent's University Hospital, Elm Park, Dublin 4

<sup>2</sup>Department of Haematology, St. Vincent's University Hospital, Elm Park, Dublin 4

<sup>3</sup>Department of Pathology, St. Vincent's University Hospital, Elm Park, Dublin 4

### DISPLAY NO. 23

Incidence of asymptomatic Chiari Malformation in an Irish Population

E. M O'Reilly, W Torreggiani

Tallaght University Hospital, Dublin

### DISPLAY NO. 24

Impact of direct GP funding for ultrasound on the waiting times for routine GP referrals

C Gillespie, A Dolan, L Lawler, VO Chan

Department of Radiology, Mater Misericordiae University Hospital, Dublin

### DISPLAY NO. 25

A systematic review of the diagnostic utility of low dose chest computed tomography compared with alternate chest imaging methods and functional measurements for the management of patients with cystic fibrosis

D. Glynn, RG. Kavanagh, F Boland, OJ. O' Connor, MM Maher,

Cork University Hospital/ Mercy University Hospital, Cork

## RADIATION ONCOLOGY PROGRAMME

### WEDNESDAY: 26<sup>th</sup> SEPTEMBER - SPR PRESENTATIONS

O'Flanagan Theatre, RCSI

Faculty of Radiologists CPD Credits:  
Radiation Oncology: 1.75 Credits (External)

#### Radiation Oncology - St Luke's Registrars Prize

Moderator: Dr Moya Cunningham

Judging Panel:	Prof Maria Hawkins Dr Orla McArdle Dr Pierre Thirion		
Time	Presentation	Presenter	Hospital
16:00	Risk-adapted Target Intraoperative Radiotherapy in Early Stage Breast Cancer: The Irish Experience	Emma Connolly	St Luke's Radiation Oncology Network
16:15	Stereotactic Radiosurgery to Surgical Cavity Post Resection of Brain Metastases: Local Recurrence and Overall Survival Rates. A Single Centre Experience.	Martin Higgins	St. Luke's Radiation Oncology Network
16:30	Clinical outcomes for Paranasal Sinus Tumours treated with Radiotherapy: A single institution retrospective analysis	Julianne O'Shea	St. Luke's Radiation Oncology Network
16:45	Long term follow up of patients treated at a single institution using a passively scattered proton beam; observations around the occurrence of second malignancies.	Neil Wallace	Cork University Hospital
17:00	The role of Tumour Volume as a prognostic factor in NSCLC patients treated with definitive radiotherapy.	Ronan Joyce	University College Hospital Galway
17:15	Patterns of use of radiation oncology services in a geriatric population	Lorna Keenan	St Luke's Radiation Oncology Network
17:30	Quantification of Organ Motion in Male and Female Patients Undergoing Long Course Radiotherapy for Rectal Cancer in the Supine Position	Killian Nugent	St Luke's Radiation Oncology Network
17:45	Conclude for the day		

## RADIATION ONCOLOGY PROGRAMME

### FRIDAY: 28TH SEPTEMBER

Cheyne Theatre, RCSI

Faculty of Radiologists CPD Credits:  
Radiation Oncology: 6 Credits (External)

<b>Session 1</b>		
Moderator: Dr C Faul, St Luke's Radiation Network & Hermitage Radiation Centre		
Time	Presentation	Presenter
9.00-9.20	Vision for Radiation Oncology 2016-2026- and beyond.	Dr Jerome Coffey Director, Cancer Control Program
9.25-9.45	Cancer Trials in Ireland: current landscape & why we need more	Ms Eibhlin Mulroe CEO- Cancer Trials Ireland
9.50-10.15	Capturing the Cancer Patient Experience - Tradition & Innovation in Cancer Registration	Prof Kerri Clough-Gorr Director, National Cancer Registry
10.20-10.40	Tea/Coffee	
<b>Session 2: New frontiers in GI Cancer</b>		
Moderator: Dr Jennifer Gilmore, St Luke's Radiation Oncology Network & Mater Hospital, Dublin		
10.45-11.05	Organ Preservation in rectal cancer	Dr Brian O'Neill Consultant Radiation Oncologist, St. Luke's Hospital Network, Dublin
11.10-11.30	Gastro-Oesophageal cancer, slow but steady progress	Dr Derek Power Consultant Medical Oncologist, Cork Cancer Research, UCC & Cork University Hospital
11.35-11.55	Clinical opportunities and Technical challenges in establishing an Abdominal SBRT Program	Dr Aisling Barry Consultant Radiation Oncologist, Princess Margaret Hospital, Toronto
12.00-12.20	Stereotactic Radiotherapy for tumours of the Liver and pancreas- Take home points from Beantown	Dr Siobhra O'Sullivan, Ipsen Travelling Fellowship/Hollywood Award Winner: 2017
12.30-13.30	Lunch (Examinations Hall)	
<b>Session 3 Advances in Radiation Oncology: New Lamps for Old?</b>		
Moderator: Professor JG Armstrong, St Luke's Hospital, St Vincent's Hospital & Beacon Hospital Dublin		
13.30-13.50	Update on node-negative Breast Cancer	Dr Joseph Martin, National Lead for Radiation Oncology, Ireland & Consultant Radiation Oncologist, University Hospital Galway
13.55-14.15	Advanced Radiation techniques for inoperable Lung cancer: SABR /4DPET	Dr Pierre Thirion Consultant Radiation Oncologist, SABR Clinic St James Hospital & Beacon Hospital, Dublin
14.20-14.45	Precision Radiotherapy-the promise of Protons	Professor Karol Sikora, Chief Medical Officer, Proton Partners International; Dean, University of Buckingham Medical School.
14.45-15.00	Tea/Coffee	
<b>Session 4: Combined Keynote address (O'Flanagan Theatre)</b>		
15.00-15.45	<b>Radiation Oncology Honorary Fellowship:</b> Oligometastatic disease in gastro-intestinal malignancies and the role of stereotactic radiotherapy	Professor Maria Hawkins Prof. Clinical Oncology CRUK MRC Oxford Institute for Radiation Oncology; Gray Laboratories, University of Oxford
15.45- 16.15	<b>Radiology Honorary Fellowship:</b> <b>Haughton Lecture:</b> Artificial Intelligence and Radiology	Bernard F. King, Jr., MD, FACR, FSAR
16.30	<b>Faculty of Radiologists – Annual General Meeting (O'Flanagan Theatre)</b> Fellows of the Faculty are welcome to attend	
17.00	End of day	
7pm	<b>Honorary Conferring &amp; Black Tie Dinner</b> Presentation of Honorary Fellowships and prizes	

## RADIATION ONCOLOGY BIOGRAPHIES

---

### **MS EIBHLIN MULROE**

Ms Eibhlin Mulroe, MBA, is currently the CEO of the Cancer Trials Ireland (formerly ICORG) with the remit to implement strategic plan to bring Irish patients early access to the latest cancer treatments through research and to establish Ireland as a recognised centre of high quality translational and clinical research.

Ms Mulroe has extensive leadership experience and was the CEO of the Asthma Society of Ireland and in July 2007, became the first CEO of the Irish Platform for Patients' Organisations, Science and Industry (IPPOSI) and Chair of a Task Force in the European Patient Academy for Therapeutic Innovation (EUPATI). Ms Mulroe led IPPOSI to partake in 2 EC Research Consortia, BBMRI and EUPATI, the latter is a unique initiative to develop an EU Patient Academy. She served as the patient representative on the Legal Consultative Panel of the Irish Medicines Board (now HPRA).

Under her leadership, since 2015, Cancer Trials Ireland commissioned an Economic Impact Report (DFK) on cancer trial activity in Ireland, worked with InterTrade Ireland in 2017/8 to revisit the all-Ireland cancer trials network and established a Patient Advocate Advisory Group.

Ms Mulroe is a member of a number of key committees including eHealth Ireland, the Royal Irish Academy Life Sciences Committee, the Governance Committee of Blood Cancer Network Ireland (BCNI) and the Advisory Board of the Cork Clinical Research Centre.

### **PROFESSOR KERRI CLOUGH-GORR**

Professor Kerri Clough-Gorr is the Director of National Cancer Registry Ireland (NCRI) and Professor of Cancer Epidemiology at University College Cork (UCC) with the remit to maximize the potential of cancer registry data collection and cancer epidemiology data use for the benefit of cancer patients nationally.

Formerly an assistant professor at the University of Bern, Switzerland, adjunct professor of Geriatrics at the School of Medicine and a visiting scholar at the Massachusetts Veterans Epidemiology Research and Information Center (MAVERIC), Professor Clough-Gorr has moved from Switzerland where she was Scientific Director of the National Institute for Cancer Epidemiology and Registration in Switzerland. She has published extensively in both geriatrics and cancer, and has a particular interest in cancer in older people and in the assessment of quality of life.

### **DR DEREK POWER**

Dr Derek Power, Consultant Medical Oncologist at Cork University and Mercy University Hospitals, Cork and Senior Clinical lecturer in Oncology, University College Cork was appointed in 2010 with a background in Pharmacy prior to his career in medicine.

He has received numerous awards, which have supported Clinical and Research Fellowships and training at Memorial Sloan Kettering Cancer Centre in New York, where he worked in Cancer Genetics and Drug development for cancer patients including those with an inherited predisposition to cancer. His research involved correlating known cancer risk single nucleotide polymorphisms (SNPs) with clinic-pathologic characteristics of individual solid tumours. Since his appointment in 2010, Dr Power has received numerous grants and developed an extensive research portfolio in collaboration with University College Cork/Cork Cancer Research/Breakthrough Cancer Research and conducted numerous trials particularly into those patients with Gastrointestinal cancer and those with Melanoma. He is currently is Chairperson of the CTI Melanoma group.

## RADIATION ONCOLOGY BIOGRAPHIES

---

### **PROFESSOR KAROL SIKORA**

Professor Karol Sikora is a founding member of Cancer Partners UK which has created the UK's largest independent UK cancer network. He was formerly Professor and Chairman of the Department of Cancer Medicine at Imperial College London and is currently Honorary Consultant Oncologist at the Hammersmith Hospital, London. He is also Dean and Professor of Medicine at University of Buckingham, a Fellow of Corpus Christi College, Cambridge and is the Chief Medical Officer of Proton Partners International.

### **PROFESSOR MARIA HAWKINS**

Professor Maria Hawkins is Honorary Consultant Clinical Oncologist at Oxford University Hospitals Trust and has been MRC Clinical Group Leader in Advanced Radiation Technology at the CRUK/Oxford Institute for Radiation Oncology. She has undertaken Clinical and Research Fellowships into new technical developments which facilitate personalising technology for gastrointestinal cancer management at the Princess Margaret Hospital, Toronto, the Royal Marsden Hospital and the Institute of Cancer Research prior to her current appointment in 2015. She has published widely and been the recipient of numerous awards including the Dr. Karol Sichler Fellowship and Sylvia Lawlor Prize, Royal Society of Medicine. Her clinical research interests include strategies for modulating Radiotherapy dose and delivery, Margin Targeted Radiotherapy techniques and the development and refinement of normal tissue toxicity models for thorax- all of which aim to enhance life quality and expectancy for individual patients through optimal tumour control and reduction in toxicity.

## RADIATION ONCOLOGY POSTER DISPLAY LIST

---

### DISPLAY NO. 1

**Solitary Fibrous Tumour / Haemangiopericytoma of the Central Nervous System: A rare tumour in a rare location**

Aisling M Glynn, Guhan Rangaswamy, Julianne O'Shea, David Fitzpatrick  
Department of Radiation Oncology, St. Lukes Radiation Oncology Centre, Beaumont Hospital, Dublin

### DISPLAY NO. 2

**Olfactory Neuroblastoma: A single institution retrospective analysis**

Julianne O'Shea, Guhan Rangaswamy, Aisling M Glynn, Sinead Brennan, Nazmy El Beltagi, Orla McArdle  
St. Luke's Radiation Oncology Network, Dublin

### DISPLAY NO. 3

**Clinical application of a three-dimensional (3D) printed bolus technique for optimal irradiation of superficial skin lesions: A case study**

Emma Connolly, Jana McHugh, Guhan Rangaswamy, Brendan Curran, Ciaran Malone, Orla McArdle  
St. Luke's Radiation Oncology Network, Dublin

### DISPLAY NO. 4

**Rates of testosterone testing amongst patients with PSA failures in St Luke's Radiation Oncology Network (SLRON)**

L.Dooley, (Radiation Oncology SHO, St Luke's Radiation Oncology Network),  
M.Dunne, (Clinical Trials Research Unit, St Luke's Radiation Oncology Network),  
P. Thirion, (Radiation Oncology consultant, St Luke's Radiation Oncology Network),  
J.Armstrong, (Radiation Oncology consultant, St Luke's Radiation Oncology Network)

### DISPLAY NO. 5

**Pituitary Carcinoma: A case series and review of literature**

Aisling M Glynn, Guhan Rangaswamy, Julianne O'Shea, Emma Fagan, David Fitzpatrick, Clare Faul  
St. Luke's Radiation Oncology Network, Dublin

### DISPLAY NO. 6

**Is radiation underutilised for palliation in paediatric osteosarcoma?**

Deirdre O'Mahony, Department of Medical Oncology, Cork University Hospital,  
Patricia Sheahan, Department of Palliative Care, Cork University Hospital,  
Paul J Kelly, Department of Radiotherapy, Cork University Hospital

### DISPLAY NO. 7

**KEAP1-NRF2 pathway activation mediates therapeutic resistance colorectal cancer**

Sean M. O'Cathail, Oxford Institute of Radiation Oncology  
Annie J. Lewis, Wellcome Trust Centre for Human Genetics  
Maria A. Hawkins, Oxford Institute of Radiation Oncology  
Tim S. Maughan, Oxford Institute of Radiation Oncology

### DISPLAY NO. 8

**Malignant Spinal Cord Compression Audit: 2016-2017**

Joyce.R, Carr.S, Small.C  
Radiation Oncology Department, University College Hospital Galway

### DISPLAY NO. 9

**Squamous Cell Carcinoma of unknown primary (CUP) in the Pelvis: A case series and review of literature**

Emma Connolly, Guhan Rangaswamy, John Gaffney, Oleksandr Boychak, Charles Gillham, Orla McArdle  
St. Luke's Radiation Oncology Network, Dublin

## RADIATION ONCOLOGY POSTER DISPLAY LIST

---

### **DISPLAY NO. 10**

**Use of External Beam Radiotherapy (EBRT) for Local Control of In-operable Squamous Cell Carcinoma of the Outer Ear – A Case Report**

Brian Gaffney, Ger'O Boyle, Sinead Carr, Nazir Ibrahim, Cormac Small, Joseph Martin

Radiotherapy Department, Galway University Hospital

### **DISPLAY NO. 11**

**Introduction of an higher quality patient information leaflet to improve adherence to bladder-filling protocols for pelvic radiotherapy**

Neil Wallace, Christina Skourou, Margaret Keaveney, Shirley Bradshaw, Michelle Mahon, Aoife Connolly, Brian O'Neill

St Luke's Radiation Oncology Network

### **DISPLAY NO. 12**

**Optimising radiation therapy quality assurance (RTQA) in Irish oncology trials**

Neil Wallace, Christina Skourou, John Gaffney, Lydia O'Sullivan, Seamus French,

Moya Cunningham, John Reynolds, Brian O'Neill

St Luke's Radiation Oncology Network

### **DISPLAY NO. 13**

**MicroRNAs in rectal cancer: Potential biomarker to predict response to neoadjuvant therapies**

RM Waldron, BM Moloney, AJ Lowery, MR Kerin

Discipline of Surgery, Lambe Institute, NUI Galway



## NOTES

[illegible]

**RCSI** Faculty of Radiologists  
Royal College of Surgeons in Ireland  
Coláiste Ríoga na Máinleá in Éireann  
123 St Stephen's Green, Dublin 2  
Tel: +353 1 402 2139  
Email: [radiology@rcsi.ie](mailto:radiology@rcsi.ie)  
[www.radiology.ie](http://www.radiology.ie)